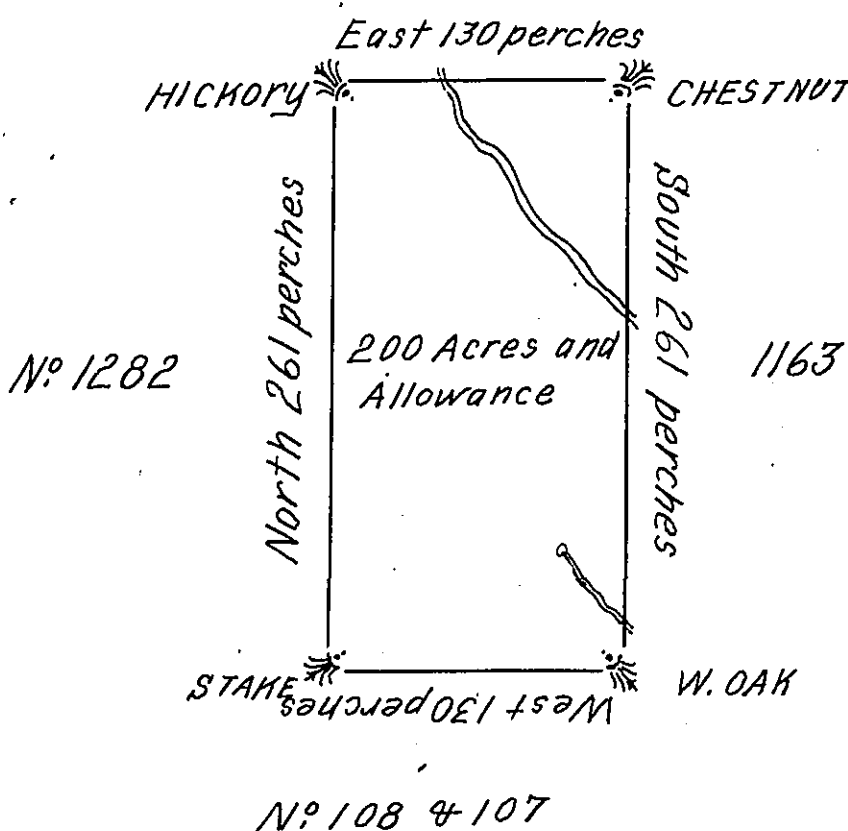


FORM No. 1.
Lot, N^o MCCLXXXI

Donation-Lands in District N^o 6

N^o 1300



In pursuance of an Act of General Assembly of the State of Pennsylvania, passed the twenty-fourth Day of February, 1785, intitled, 'An Act for directing the mode of distributing the Donation-Lands, promised to the Troops by this Commonwealth, and by order of the Surveyor General with the approbation of the Honourable the Executive-Council, I have surveyed on the second Day of December 1785, the above described Tract of Two hundred Acres of Land, and Allowance of Six per Cent for Roads &c N^o 1281 situate in District N^o 6, on the West Side of the Allegheny River, in the County of Westmoreland.

John Lukens Esq. }
Surveyor General }

Ja. Chrystie Deputy
Surveyor.

IN TESTIMONY that the above is a copy of the original remaining on file in the Department of Internal Affairs of Pennsylvania, made conformably to an Act of Assembly approved the 16th day of February 1833, I have hereunto set my hand and caused the Seal of said Department to be affixed at Harrisburg, this twenty-third day of April 1907

Samuel Brown
Secretary of Internal Affairs.